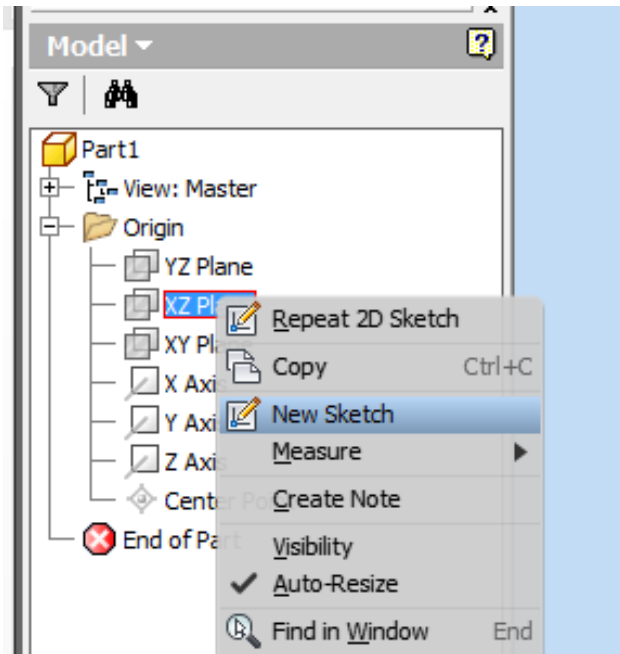
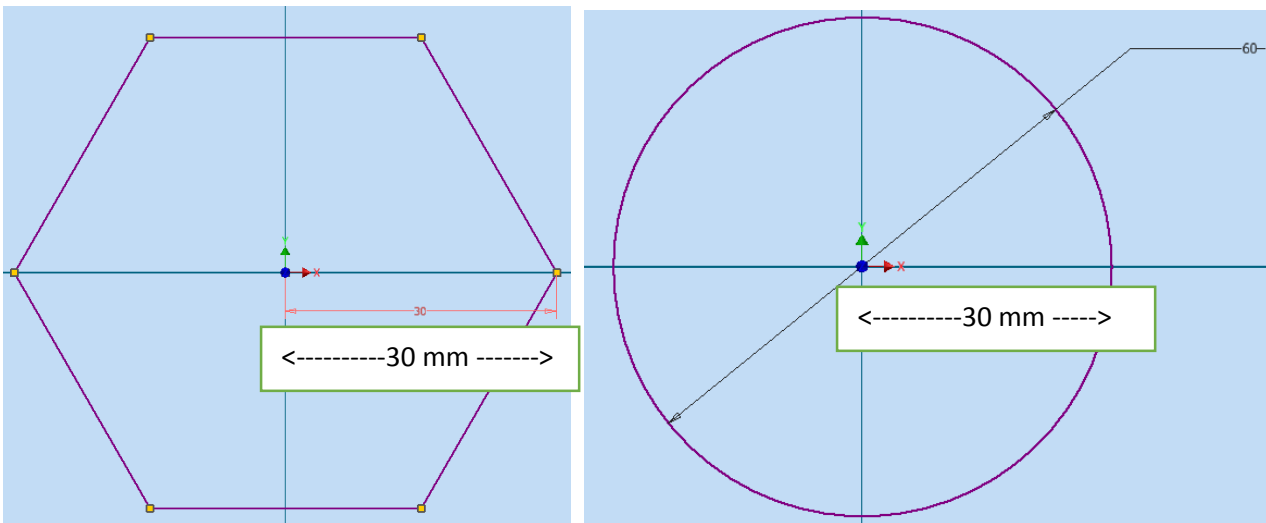


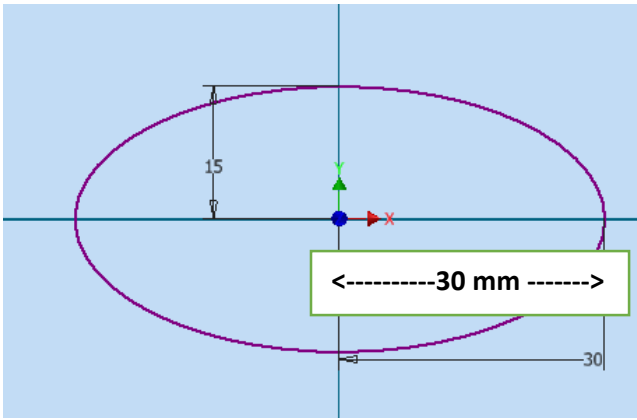
Key Chain

1. Open *Inventor*.
2. In the *Get Started* tab, click on **Projects > New > New Single User Project**. Click Next.
3. In the **Project Name** box, type *Key Chain*. Click **Next > Finish > OK**.
4. *You will use this process whenever you start a new project.*
5. In the *Get Started* tab, click on **New > Metric > Standard(mm).ipt**, then *Create*. This will open a new, standard metric part file in *Inventor*.
6. SAVE your part as *Key Chain_YOUR NAME*
7. Create a New Sketch on the XZ plane (Right Click > New Sketch).

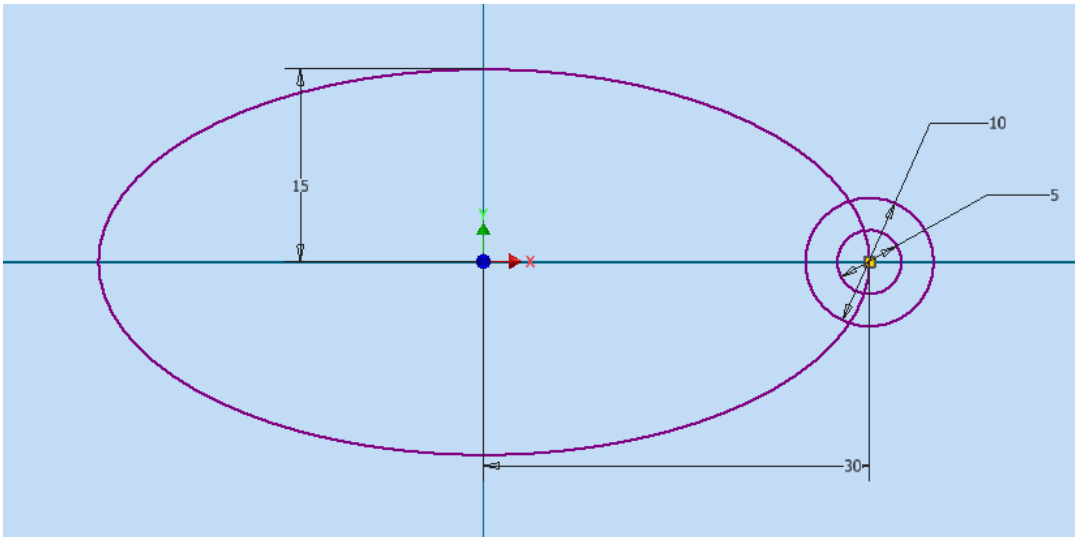


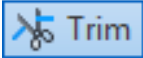
8. Use a *Polygon*, *Circle* or *Ellipse* to sketch the outline of your key chain. Be sure it is within a radius of 30 mm. (You can make a more complex design within these parameters.)

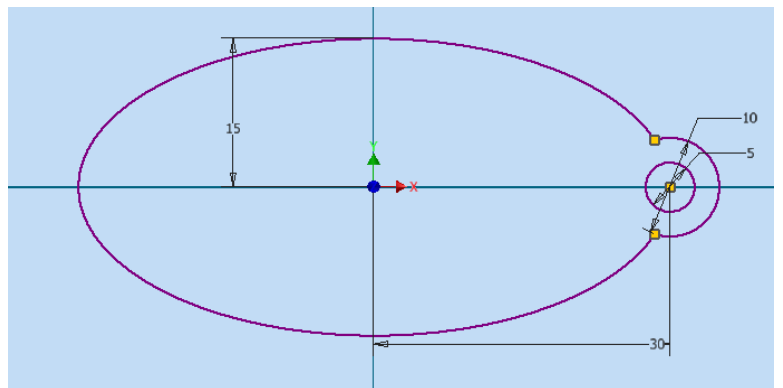
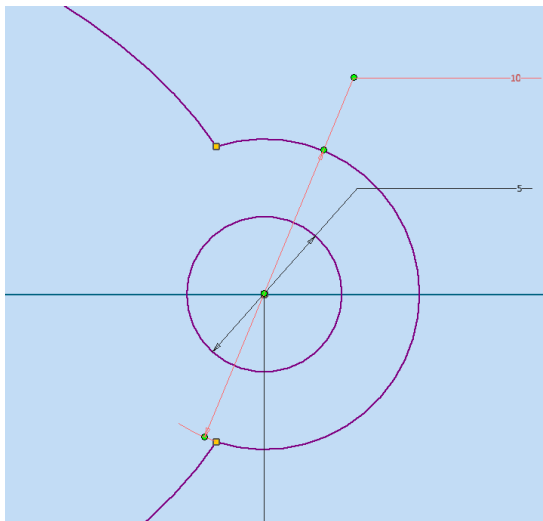




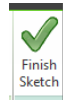
9. Add a ring hole:



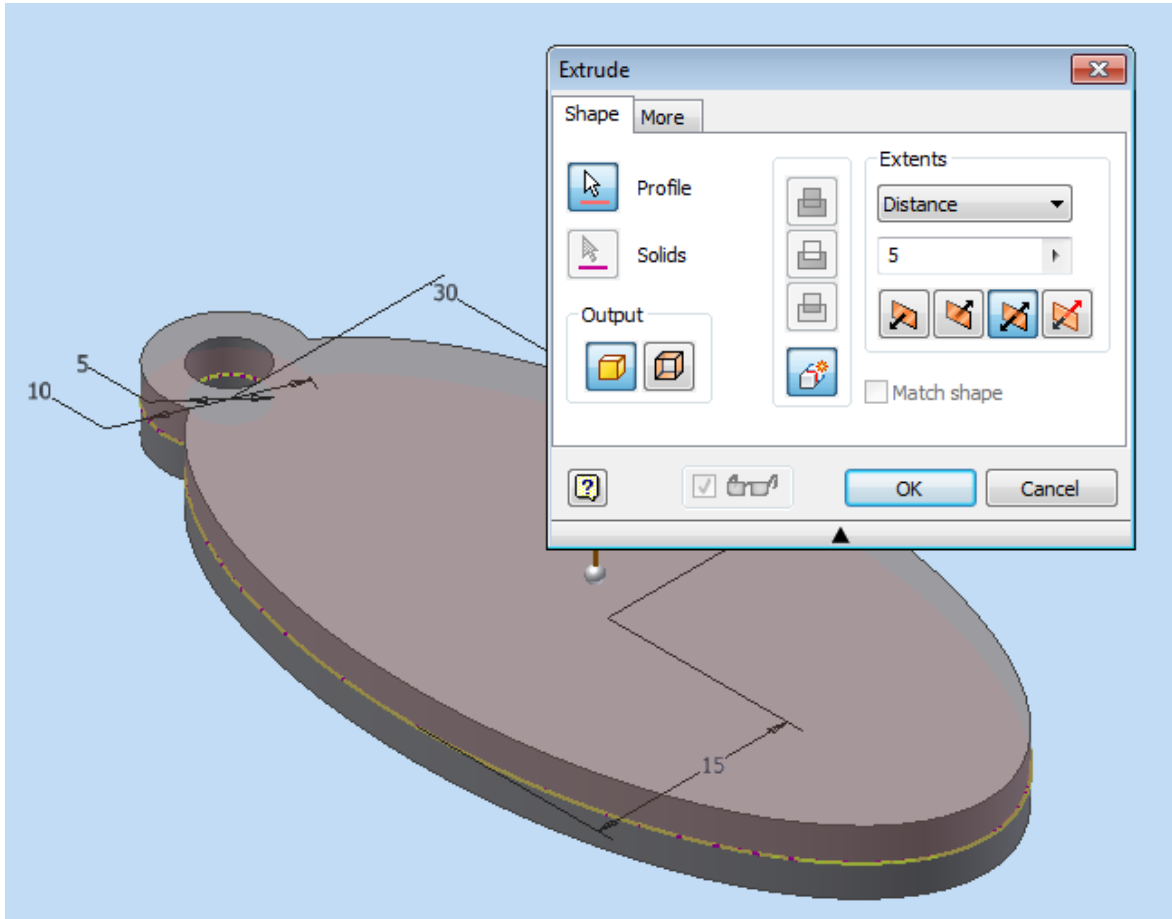
10. Trim  until you have a *Valid Sketch*.



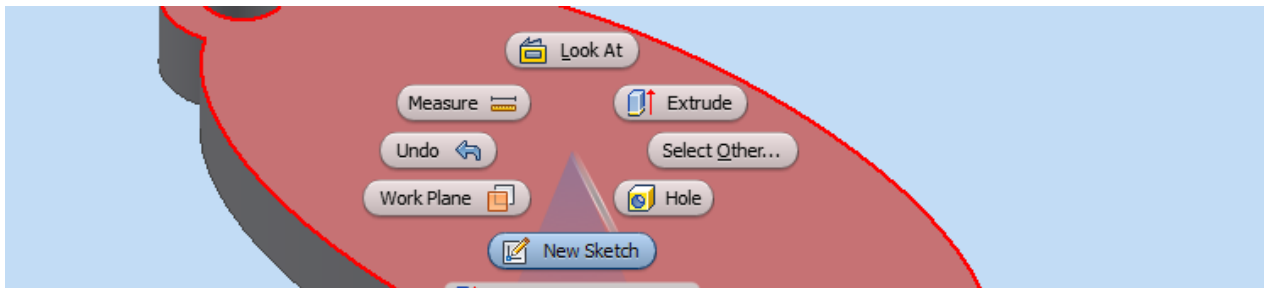
11. Finish the Sketch

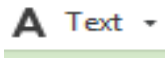


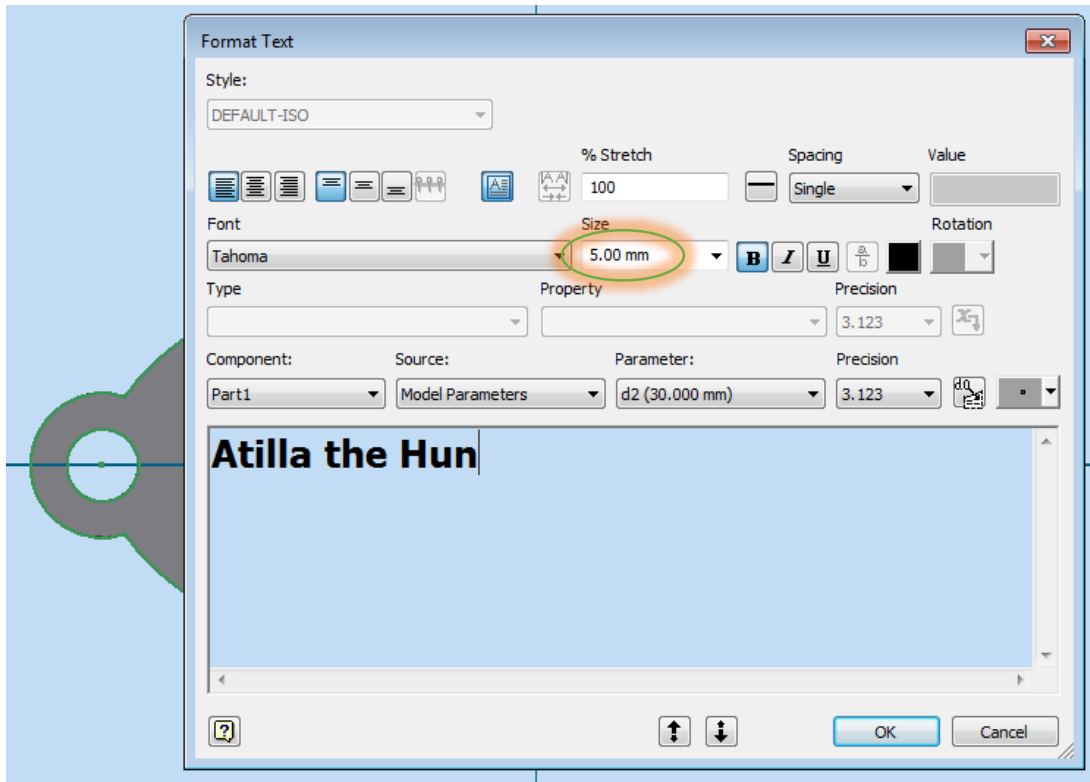
12. Extrude the sketch to 5 mm, symmetrically. Click OK.



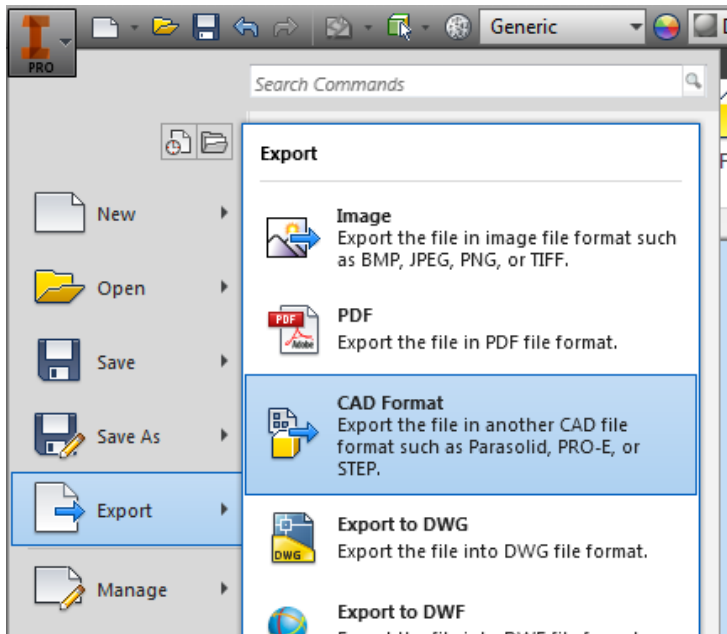
13. Right Click on the top surface > **New Sketch**.



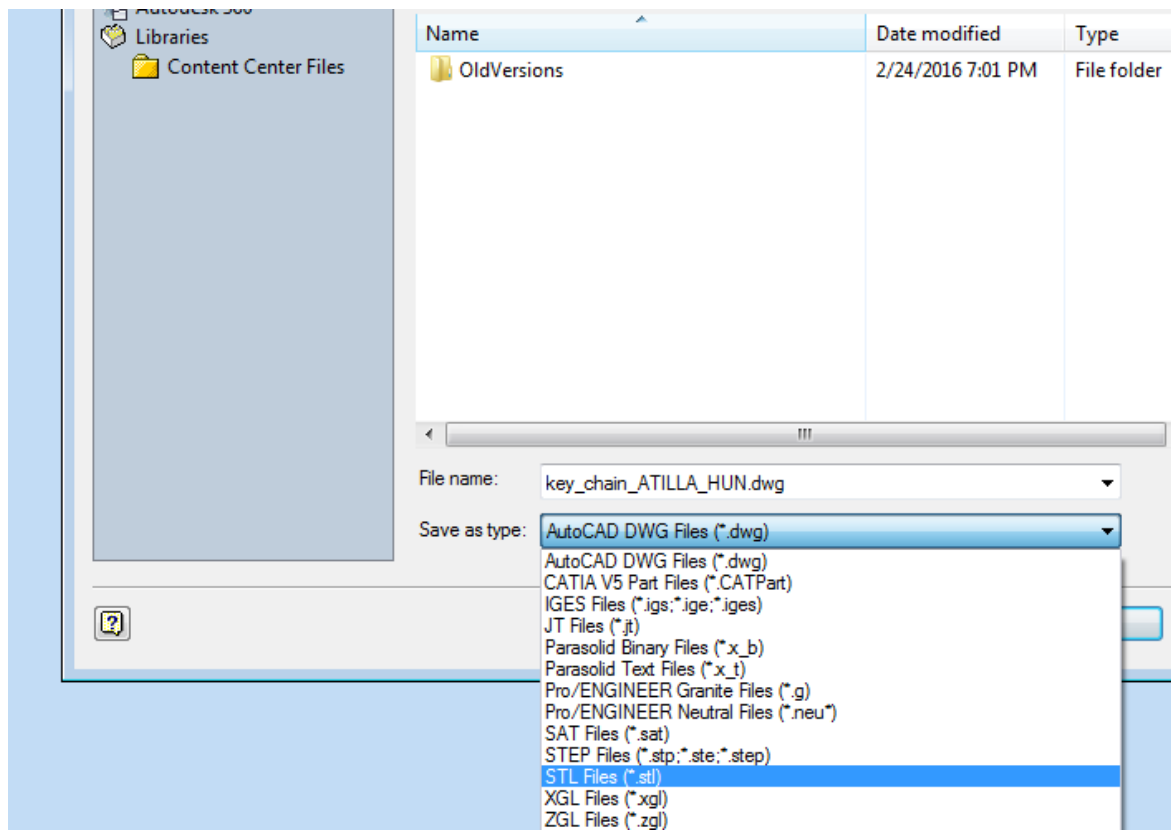
14. Use the **Text** tool  to place your name on the surface. Use **5 mm** for the size. Click OK. Finish the Sketch.



15. Extrude the text **DOWN**, with a **CUT** of **2 mm**. **SAVE your Key Chain!**
16. Go to the **Application Menu > Export > CAD Format**.



17. Choose “STL files”.



18. Your Key Chain is ready to add to a *Makerbot* file. Notify your teacher with an Engrade Message.